

LALIZAS 
Simply life saving



MARITIME SAFETY CATALOGUE

Contact Lalizas Team and find out your nearest Lalizas Stock Point world-wide.

3 ways to contact us:

- Call us at +30 2104226274
- Send us your enquiry at <http://www.lalizas.com/contact.php>
- Drop us an e-mail at: commercial@lalizas.com

Our qualified sales department will help you:

- Define and serve your product needs
- Reply to any technical questions
- Guide you to your nearest port of supply



- 4 - 6**  **Liferafts & Accessories**
- 7 - 13**  **Lifejackets & Accessories**
- 14 - 16**  **Lifebuoy Rings, Lights & Accessories**
- 17**  **Inflatable Deep Tank Check Boats**
- 18 - 19**  **Immersion Suits**
- 20 - 22**  **Breathing Devices &
Fire-Fighting Equipment**
- 23 - 27**  **Navigation & Lifeboat Equipment**
- 28 - 29**  **IMO Signs & Tapes**
- 30 - 32**  **Service Network & After Sales
Support**



LALIZAS

BINOCULARS



LIFEBUOY RING & LIGHT



INFLATABLE LIFEJACKET



EEBD



FIRE-FIGHTING EQUIPMENT





LIFEJACKET



IMMERSION SUITS



LIFEBUOY RING & LIGHT



LIFERAFTS



IMO SIGNS



WORK VEST

Simply life saving



0098



Liferaft SOLAS LALIZAS OCEANO

SOLAS Approved by Germanischer Lloyds

- T.O.B. Type with Optional Equipment Packs (SOLAS Pack A or SOLAS Pack B)
- Capacities Available from 6 to 35 Persons
- GRP Canister
- Durable Rubber Fabric
- Double Chambered Tubes
- Stowage Height up to 36m (Painter line up to 46m)
- Deck Cradle included in the box
- Insulated Floor for low temperature conditions
- Non- Hiding / Strongly Day light reflecting Canopy with Reflective Tapes providing maximum visibility
- Ready for use within Marine Operational Conditions -30°C up to +65°C
- Global Service Station Network

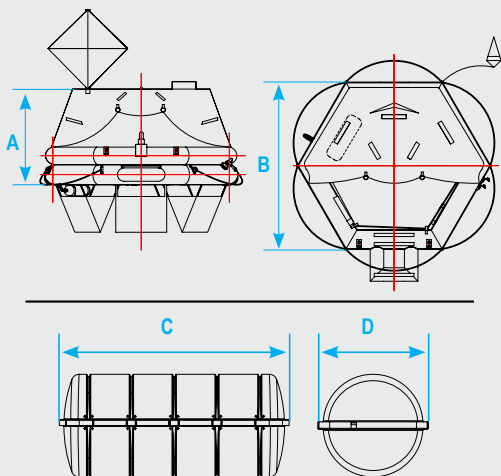




0098



6 to 15 Person



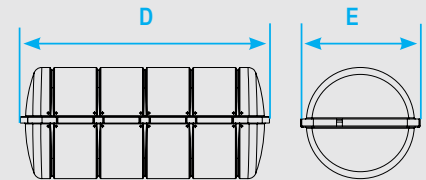
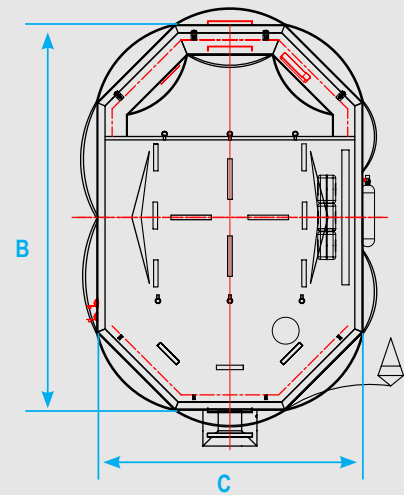
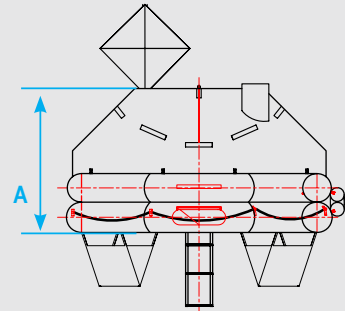
Code	Persons	Pack	Dimensions (mm)				Cradle included Dimensions (mm)	
			A	B	C	D		
79867	6	A	1200	2104	1090	615	600 x 560	
79903		B			1045	545		
79868	8	A	1250	2390	1090	615		
79904		B			1045	545		
79869	10	A	1400	2694	1230	630		
79905		B			1090	615		
79870	12	A	1500	2924	1230	630		
79906		B			1090	615		
79871	15	A	1600	3238	1285	670		600 x 660
79907		B			1230	630		600 x 560



0098



20, 25, 30 & 35 Person



Code	Persons	Pack	Dimensions (mm)					Cradle included Dimensions (mm)
			A	B	C	D	E	
79873	20	A	1600	4304	2974	1335	696	600 x 660
79909		B				1285	670	
79874	25	A	1650	4894	3194	1490	757	1000 x 710
79910		B				1335	696	600 x 660
79875	30	A	1700	5384	3414	1700	765	1000 x 710
79911		B				1490	757	
79876	35	A	1750	5899	3568	1700	765	1000 x 710
79912		B				1490	757	

Code.....70290

HAMMAR H20 Hydrostatic Release for Life Rafts (USCG&EC Approved SOLAS)

- Simple to install and clearly marked with the expire date
- No spare parts or service required
- Must be replaced after two years



Code.....71892

Lashing with Hook (Big)

- Suitable for :
- All Hydrostatic Release Units
 - OCEANO Life Raft Capacities





SOLAS lifejackets

Lifejacket Lamda Auto, SOLAS



1463



SPECIFICATIONS

CODE	LALIZAS LAMDA SOLAS	
	71107	71216
LIFEJACKET CATEGORY	150Nt	275Nt
AVERAGE ACTUAL BUOYANCY	180+ Nt	295+ Nt
SOLAS TESTING STANDARDS	MSC 201 (81), MSC 207 (81), MSC 200 (80) & MSC 226 (82)	
INFLATED CHAMBERS	DOUBLE	
INFLATED MECHANISMS	2 x AUTOMATIC/MANUAL	
CO ₂ CYLINDERS	2 x 33 gr	2 x 60 gr
PRESSURE RELIEF VALVE	YES	
TURNING TIME minimum	< 5 sec	
INDIVIDUAL FABRIC COVER	Four Tailored Pieces	
FABRIC MATERIAL	Soft PVC	
BELT MATERIAL	Top Quality	
LIFTING LOOP	Yellow	
BUDDY LINE	YES	
"EASY ACCESS" WHISTLE & LIFEJACKET LIGHT POSITION	YES	
EASY-WEAR & PRECISE FIT DESIGN	YES	
USER INSTRUCTIONS IMPRINT	YES	
RAW MATERIALS TESTED ACCORDING TO	ISO:12402-7, ISO:12402-8	



Code.....71211

Inflatable Lifejacket Protective Work Cover

- Provides shielding against heat, sparks, flame, soft chemicals



Code...02197

CO₂ Gas Cylinder, 60gr

Code...00348

CO₂ Gas Cylinder, 33gr



Code.....71161

Waist Belt Extender for SOLAS Infl. Lifejackets



1463



Lifejacket Belt-Pack, Delta Auto 150N, SOLAS

SPECIFICATIONS	LALIZAS DELTA SOLAS
CODE	71108
LIFEJACKET CATEGORY	150Nt
AVERAGE ACTUAL BUOYANCY	180+ Nt
SOLAS TESTING STANDARDS	MSC 201 (81), MSC 207 (81), MSC 200 (80) & MSC 226 (82)
INFLATED CHAMBERS	DOUBLE
INFLATED MECHANISMS	2 x AUTOMATIC/MANUAL
CO ₂ CYLINDERS	2 x 33 gr
PRESSURE RELIEF VALVE	YES
TURNING TIME minimum	< 5 sec
FABRIC MATERIAL	Nylon Valice
BELT MATERIAL	Top Quality
LIFTING LOOP	Yellow
BUDDY LINE	YES
"EASY ACCESS" WHISTLE & LIFEJACKET LIGHT POSITION	YES
EASY-WEAR & PRECISE FIT DESIGN	YES
USER INSTRUCTIONS IMPRINT	YES
RAW MATERIALS TESTED ACCORDING TO	ISO:12402-7, ISO:12402-8

SOLAS/MED & CANADIAN APPROVED FOAM LIFEJACKETS COLLECTION

All raw materials and Accessories of the lifejacket are tested and approved per SOLAS/MED requirements



0098



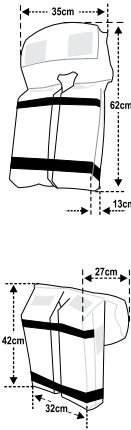
CANADIAN APPROVAL



SOLAS CERTIFICATION	SOLAS 74, as amended by IMO Resolution MSC. 201 (81), MSC. 216 (82), L.S.A. Code as amended by, 207 (81), 218 (82); and MSC. 81 (70), MSC. 200 (80), MSC. 226 (82)
CANADIAN CERTIFICATION	Canadian Standards TP 14612, Approval Procedures for Life Saving Appliances and Fire Safety Systems, Equipment and Products and TP 14475, Canadian Life Saving Appliance Standard. Can be placed onboard Canadian vessels

Advanced Folding Lifejacket SOLAS- (LSA Code) 2010

SPECIFICATIONS	Advanced 2010 ADULT FOLDING
CODE	70179
BUOYANCY	194 Nt
BODY WEIGHT	up to 140 kg*
AVERAGE TURNING TIME	1,4 sec
RETRO-REFLECTIVE TAPE	400 cm
LIFTING LOOP	YES
BUDDY LINE	YES
WHISTLE	YES
STORAGE TEMP	-30 C up to +65 C



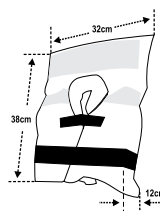
Advanced Lifejacket SOLAS-(LSA Code) 2010

SPECIFICATIONS	Advanced 2010 ADULT	Advanced 2010 CHILD
CODE	70178	70177
BUOYANCY	203 Nt	93 Nt
BODY WEIGHT	up to 140 kg*	from 15 to 43 kg
AVERAGE TURNING TIME	1,4 sec	1,4 sec
RETRO-REFLECTIVE TAPE	400 cm	400 cm
LIFTING LOOP	YES	YES
BUDDY LINE	YES	YES
WHISTLE	YES	YES
STORAGE TEMP	-30°C up to +65°C	-30°C up to +65°C



Advanced Infant Lifejacket SOLAS-(LSA Code) 2010

SPECIFICATIONS	Advanced 2010 INFANT
CODE	70176
BUOYANCY	77 Nt
BODY WEIGHT	up to 15 kg
AVERAGE TURNING TIME	1,4 sec
RETRO-REFLECTIVE TAPE	400 cm
LIFTING LOOP	YES
BUDDY LINE	YES
WHISTLE	YES
STORAGE TEMP	-30 C up to +65 C



* Codes 70178 & 70179 are designed to fit persons weighting up to 140 kg, with a chest girth up to 1750 mm

NON SOLAS lifejackets - Work vests



Inflatable Lifejackets Sigma 150N, CE ISO 12402-3

SPECIFICATIONS	LALIZAS SIGMA ISO
CODE	71094 up to 71097
BUOYANCY CHAMBER	150Nt
PRODUCT CERTIFICATES	ISO 12402-3/2006
TURNING TIME minimum	< 5 sec
INDIVIDUAL FABRIC COVER	Five Tailored Pieces
BELT MATERIAL	Top Quality
AUTOMATIC	71094 & 71096
MANUAL	YES
HARNES & D-RING	71094 & 71095
LIFTING LOOP	Yellow
INSPECTION WINDOW	YES
"EASY ACCESS" WHISTLE & LIFEJACKET LIGHT POSITION	YES
EASY-WEAR & PRECISE FIT DESIGN	YES
USER INSTRUCTIONS FRONT IMPRINT	YES
RAW MATERIALS TESTED ACCORDING TO	ISO:12402-7, ISO:12402-8

Sigma Lifejackets feature the following characteristics:

- CE ISO 12402-3 approval
- CE ISO 12401 approval on all integral black harnesses
- Ultra reliable firing mechanism
- Compatible with all major suppliers CO₂ bottles
- Commercial heavy duty weight protective outer cover
- Easy re-packing
- Economical re-arming kits
- 170 Newtons of buoyancy when fully inflated
- Auto heads designed not to fire in heavy weather
- Maintain the correct flotation position in the water (face-up)
- Fully adjustable straps
- Heavy-Duty, Stainless D-Rings for attachment of a safety line



Inflatable Lifejackets Omega 275N, CE ISO 12402-2

SPECIFICATIONS	LALIZAS OMEGA ISO
CODE	71103 up to 71106
BUOYANCY CHAMBER	275Nt
PRODUCT CERTIFICATES	ISO 12402-2/2006
TURNING TIME minimum	< 5 sec
BELT MATERIAL	Top Quality
CO2 Cylinders	60gr
AUTOMATIC	71103 & 71105
MANUAL	YES
HARNES & D-RING	71103 & 71104
LIFTING LOOP	Yellow
"EASY ACCESS" WHISTLE & LIFEJACKET LIGHT POSITION	YES
EASY-WEAR & PRECISE FIT DESIGN	YES
USER INSTRUCTIONS FRONT IMPRINT	YES
RAW MATERIALS TESTED ACCORDING TO	ISO:12402-7, ISO:12402-8

Omega Lifejackets feature the following characteristics:

- CE ISO 12402-2 approval
- CE ISO 12401 approval on all integral black harnesses
- Twin welded air bladder seam for double security
- Ultra reliable firing mechanism
- Compatible with all major suppliers CO₂ bottles
- Commercial heavy duty weight protective outer cover
- Easy re-packing
- Economical re-arming kits
- 290 Newtons of buoyancy when fully inflated
- Auto heads designed not to fire in heavy weather
- Maintain the correct flotation position in the water (face-up)
- Fully adjustable straps
- Heavy-Duty, Stainless D-Rings for attaching a safety line



Inflatable Lifejackets Belt-Pack, Delta 150N, CE ISO 12402-3

SPECIFICATIONS	LALIZAS DELTA ISO
CODE	71109 & 71201
BUOYANCY CHAMBER	150Nt
PRODUCT CERTIFICATES	ISO 12402-3/2006
TURNING TIME minimum	< 5 sec
BELT MATERIAL	Standard
AUTOMATIC	71201
MANUAL	71109
LIFTING LOOP	Yellow
"EASY ACCESS" WHISTLE & LIFEJACKET LIGHT POSITION	YES
EASY-WEAR & PRECISE FIT DESIGN	WAIST + CHEST ADJUSTABLE STRAPS
USER INSTRUCTIONS IMPRINT	YES
RAW MATERIALS TESTED ACCORDING TO	ISO:12402-7, ISO:12402-8



Custom Solution

...available upon request!



CUSTOMIZED PRODUCTION OF INFLATABLE LIFEJACKETS FOR GOVERNMENT TENDERS & MILITARY PURPOSES

For conditions & requirements contact us: commercial@lalizas.com



SOLAS '74 Life Jackets

SPECIFICATIONS	SOLAS '74 CHILD	SOLAS '74 ADULT
CODE	70157	70159
BUOYANCY CHAMBER	55 Nt	95 Nt
BODY WEIGHT (kg)	0-55	>55



Front

Back

Work Vest 50N, CE ISO 12402-5

- Approved by ISO 12402-5, 12402-7, 12402-8
- Light Weight
- Polyester anti fire outer shell
- Soft PE buoyant material
- Adjustable webbings by stainless steel D-rings and hooks
- Fabric pocket for tools or other light equipment
- Suitable for adults > 40kg with chest size 80-130cm

SPECIFICATIONS	WORK VEST ADULT
CODE	71144
BUOYANCY CHAMBER	50 Nt
BODY WEIGHT (kg)	>40
CHEST SIZE (cm)	80-130



Code.....70010 blue
Code.....70020 Orange

Nautical Whistle



Code.....70180

Retro reflective Tape (ROLL) - SOLAS

- Retroreflective tape to SOLAS (L.S.A Code) by Lalizas
- Tested according to IMO Res. A. 658(16)
- Length 40m.

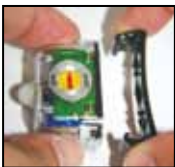
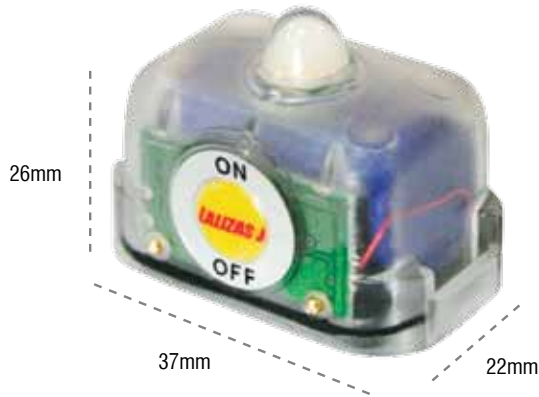


0098

Code.....71209

Lifejacket LED Flashing Light “Safelite II” water activated ON-OFF, L.S.A.Code

- **Water-Activated LED Flashlight Technology**
Extra powerful LED light. Offers lower consumption and longer life and operates automatically when it comes in contact with water.
- **Durable Plastic Body**
100% Waterproof via ultrasoun welding & epoxy resin for extra safety.
- **Lithium Battery**
Ensures 5 year lifetine and more than 8 hours of continuous operation.
- **Universal Size Clamp**
Fits & locks easy in two moves with every 20 - 40 cm lifejacket belt, providing security & stability against sudden moves of panic
- **Inspection Friendly Label**
Eay to read label for instant inspection.



Code.....71215

Hole Puncher For 71209



Code.....71214

Base for Lifejacket Flashing Light 71209



0098

LALIZAS Lifbuoy Ring SOLAS

SPECIFICATIONS	Lifbuoy Ring SOLAS 4,0kg
CODE	70110
WEIGHT	4.0 kg (8.81 lb)
DROP HEIGHT	80m
LIFEBUOY SHELL / INTERNAL MATERIAL	PE / PU Frothing
GRAB LINE MATERIAL	PE
HIGHLY VISIBLE COLOUR	YES
STORAGE TEMPERATURE	-30 C up to + 65 C
RESISTANT TO FLAME / DIESEL OIL	YES / YES
TESTED FOR OPERATION w. LIGHT & SMOKE SIGNAL	-
DIAMETER OUTER / INNER	730mm / 440mm

SPECIFICATIONS	Lifbuoy Ring SOLAS 2,5kg
CODE	70090
WEIGHT	2.5 kg (5.11 lb)
DROP HEIGHT	80m
LIFEBUOY SHELL / INTERNAL MATERIAL	PE / PU Frothing
GRAB LINE MATERIAL	PE
HIGHLY VISIBLE COLOUR	YES
STORAGE TEMPERATURE	-30 C up to + 65 C
RESISTANT TO FLAME / DIESEL OIL	YES / YES
TESTED FOR OPERATION w. LIGHT & SMOKE SIGNAL	-
DIAMETER OUTER / INNER	730mm / 440mm

PRODUCT CERTIFICATES MED approved according to SOLAS 74/78 as amended Reg. III/4, III/7, III/34, X/3, MSC.48(66), MSC.81(70) [LSA Code] as amended by MSC.207(81), MSC.36(63) and MSC.97(73) [HSC Code].

REFLECTIVE TAPE Lalizas LA70180, SOLAS/MED approved Retro- Reflective Material. In compliance with resolution A.658 (16)



Floating Rope & Line, orange

SPECIFICATIONS	Roll			Pre-cut
	98991	98992	98993	70260
CODE	98991	98992	98993	70260
DIAMETER (mm)	6	8	10	8
LENGTH (m)	200	200	200	30
STRENGTH (kg)	100	260	310	400



Code.....20693

Mooring Ring with 30m rope

Specifications:

- Designed for retrieval of MOB
- PVC moulded ring, tied to a 30m floating rope
- Ext. Diam.: 17,5 cm
- Int. Diam.: 10,5 cm



Code.....70000

Lifbuoy Light holder



0098

Code.....70030

Lifbuoy Light M.O.B (LSA Code)

Specifications

- CE approved to SOLAS (L.S.A Code)* by GL*
- Less than 2cd in all directions of the upper hemisphere for a period of at least 2h (at white color).
- To be used with alkaline batteries Size D.



Code.....50530

Spring Clip Ø35



Code.....99826 + 99824

Fixed Mount Support Base for "Store-All" Cases - Graphite

Rail Support Base for "Store-All" Cases - Graphite

Code.....71325

LALIZAS Lifbuoy Light SOLAS/MED

Specifications:

- SOLAS/MED approved
- Five year life time
- No maintenance or replacement batteries are required
- Supplied complete with bracket & 1m Lifbuoy Lanyard
- Compact size
- Mounting bracket with easy fitting in all locations
- Advanced LED technology for low consumption and enhanced reliability



0098



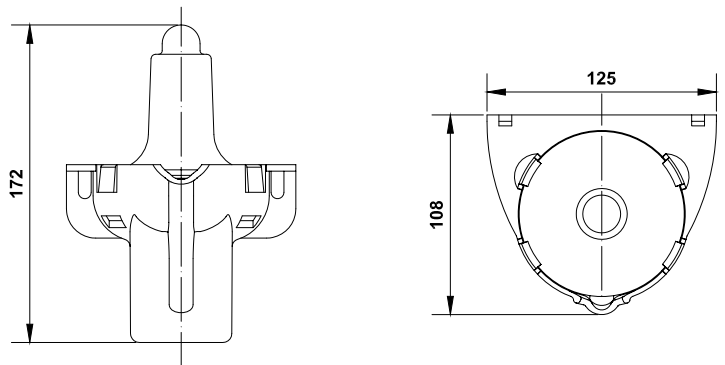


Code.....71326

LALIZAS Lifebuoy Light SOLAS/MED-ATEX/IECEX

Specifications

- The Best Intrinsic Safe Lifebuoy Light in the World –ATEX T4 Certificate (safe use in potentially explosive atmospheres where the ignition point is $\geq 135^{\circ}\text{C}$)
- SOLAS/MED approved
- ATEX & IECEX Intrinsically Safe Approvals
- Intrinsically safe, for use in all potentially explosive zones
- Five year life time
- No maintenance or replacement batteries are required
- Supplied complete with bracket & 1m Lifebuoy Lanyard
- Compact size
- Mounting bracket With Easy fitting in all locations
- Advanced LED technology for low consumption and enhanced reliability



Dimensions are in mm



LALIZAS Inflatable tank check boat "Hercules 240"

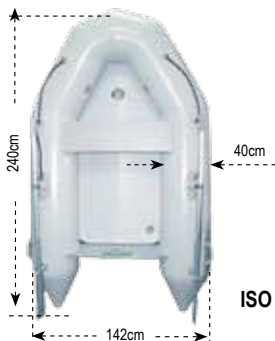
- Suitable for inspection of deep tanks of tanker ships.
- Made of extra strong PVC 1100D 1050 g/m2 with cold welded seams.
- PVC material providing resistance to extreme temperatures and chemicals, such as petrol and oil
- 2-year warranty on the tube materials and seams

Remember to carry the necessary safety equipment at all times when using any inflatable boat.

SPECIFICATIONS

Inflatable boats

	50920	50921
CODE	50920	50921
"HERCULES"	240	240CK
MAXIMUM NUMBER OF PERSONS	3	
MAXIMUM LOAD	310 kg	
MAXIMUM POWER	4,9 Hp / 3,6 KW	
OVERALL DIMENSIONS	240 x 142 cm	
STOWED DIMENSIONS	102x32x48 cm	102x30x60 cm
WEIGHT (INCLUDING FLOOR)	26 kg	34 kg
FLOOR	3 Wooden Slats (80x20x1,2cm)	Continuous Foldable Wooden
KEEL	-	Inflatable
AIR CHAMBERS DIAMETER	40 cm	
NUMBER OF AIR CHAMBERS	2	
SEAT	Wooden Seat (80x23x1,5cm)	
D-RINGS	1	
STANDARD EQUIPMENT INCLUDED	Packaging Bag, Repair Kit, Foot Pump, 2 Paddles	



ISO CD 6185





0098

Immersion Suits

- To be worn in conjunction with an approved lifejacket
- Can be unpacked, donned and secured in less than 2 min
- Fitted with 400 cm² of LALIZAS SOLAS retro-reflective tape
- Permanent Hands cover with neoprene gloves
- Covers whole body, apart from face
- Highly visible red color
- Ergonomically tested, per MSC/circ980
- Thermally Insulated: has passed all MSC/Circ980 tests
- Diesel-Oil Resistant: has passed all MSc/Circ 980 tests
- Flame Resistant: has passed all MSC/Circ980 tests
- Has been submitted successfully to water ingress, jump and leak tests, per MSC/circ 980
- Stowage Temperature: -30 C to +56 C (Temperature Cycling
- Tests per MSC/Circ 980)

Specifications:

- Neoprene material
- Neoprene gloves
- Original LALIZAS SOLAS retro reflective tape, code: 70180
- Buddy line with special pocket case
- Extra safe zipper. Shields the suit & prevents water penetration



0098

Immersion Suits Insulated “Neptune”

SPECIFICATIONS	Immersion suite, Adult
CODE	70454
SIZE	Universal Size

SPECIFICATIONS	Immersion suite, Adult
CODE	70455
SIZE	Xlarge



Junior Immersion Suit ‘Neptune Junior’, Insulated NON-SOLAS

SPECIFICATIONS	Immersion suite, child
CODE	71246
SIZE	Junior

MSC /Circ./1047, MSC /Circ. 1114

Code.....70168

Inspection device for Immersion suit

The aluminium kit contains a set of Servicing Equipment.

- Face fixture (two parts)
- Ppressure gauge (0-6kPa)
- Foot pump (with multi-valve adaptor)
- Glue and applicator (two pieces)





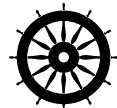
LALIZAS SOLAS/MED Self Contained Breathing Apparatus

This SOLAS/MED -approved SCBA offers reliability and comfort and its key features are:

- Open circuit on demand positive pressure Self Contained Breathing Apparatus
- Anatomic carbon fibers composite material back frame with harness for perfect and easy donning
- Both back frame and harness are flame retardant, waterproof and antistatic
- With warning whistle providing a continuous sound of high intensity (>90Db) warning the user that the air is dropping down.
- Packed in heavy duty plastic carrying suitcase

The SCBA contains the following parts:

- Breathing apparatus carrier with harness
- Pressure regulator with gauge & whistle
- Pressure & air flow regulator
- Breathing apparatus facemask
- Compressed air cylinder
- Compressed air cylinder valve, 300bar



0098



SPECIFICATIONS	Breathing Apparatus
CODE	71328
CYLINDER VOLUME (L)	9
CYLINDER MATERIAL	Carbon Composite
WORKING PRESSURE (Bar)	300
WARNING PRESSURE (Bar)	40-60
WEIGHT (kg)	≤12
PACKING DIMENSIONS (cm)	280x445x735
APPROVAL	SOLAS/MED

Code.....02303

**Spare compressed air cylinder 9lt & Valve
300bar assembly with air**



LALIZAS SOLAS/MED Self Contained Breathing Apparatus



0098



Code.....02302

**Spare compressed air cylinder 6lt & Valve
300bar assembly with air**

SPECIFICATIONS

Breathing Apparatus

CODE	71327
CYLINDER VOLUME (L)	6
CYLINDER MATERIAL	Steel
WORKING PRESSURE (Bar)	300
WARNING PRESSURE (Bar)	40-60
WEIGHT (kg)	≤15
PACKING DIMENSIONS (cm)	270x490x755
APPROVAL	SOLAS/MED



LALIZAS Emergency Evacuation Breathing Device (EEBD) "ESCAPE-15"

The Lalizas Emergency Escape Breathing Device (EEBD), complies with the amended SOLAS ch.II-2 and the IMO MSC/Circ.849. All vessels on international routes must carry EEBD's on board.

Lalizas approved EEBD carries the following characteristics:

- Flame resistant materials, silver in colour to reflect heat and be highly visible.
- Durable and reliable construction with low maintenance
- Full-face hood fits all persons
- Steady air-flow for 15 minutes with sufficient air delivery rate
- Easy visual access on the pressure gauge
- Working temperature range: -10°C to 65°C
- Easy to refill cylinder - no adaptor required
- Approved to SOLAS Chapter II - 2 and MSC/Circ.849 & designed to meet EN1146:2005 & ISO 23291-1(2008)

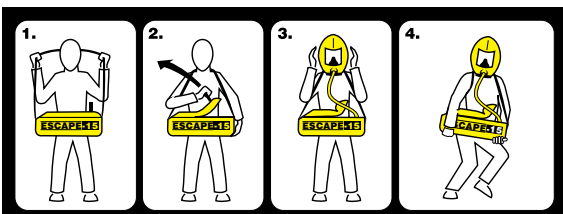
SPECIFICATIONS

Breathing Device

CODE	70321
VOLUME	14300 cm ³
WEIGHT	5500 gr
HEIGHT	22 cm
WIDTH	13 cm
LENGTH	50 cm



0098



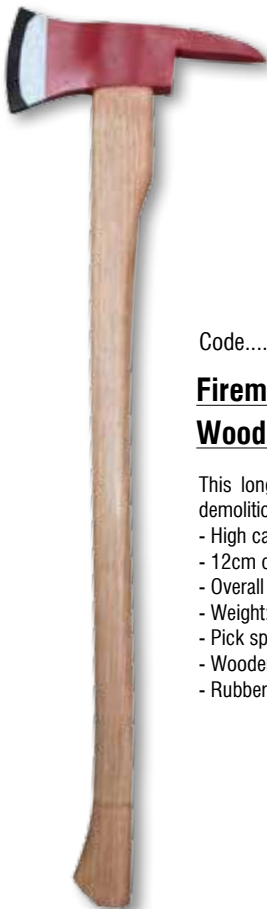


0098



LALIZAS Fire Hose CE

- EPDM Lining (synthetic rubber lining)
- Circular woven 100% polyester high tenacity yarn fabric
- Working Pressure: 15 bar
- SOLAS Approved by GL
- EPDM Lining (synthetic rubber lining)
- Circular woven 100% polyester high tenacity yarn fabric
- Working Pressure: 15 bar
- Available in various diameters from 1.5"/38mm up to 2.5"/64mm
- Available in various lengths with and without couplings



Code.....71685

Fireman Axe with Long Wooden Handle 2,8kg

This long fireman's axe is the ideal tool for demolition work.

- High carbon steel blade
- 12cm cutting edge
- Overall length: 90cm
- Weight: 2.8kg
- Pick spike for piercing and prying
- Wooden ash handle
- Rubber protective blade cover



Code.....71686

Fireman Axe with Short Anti Slip Handle 1,2kg

This short fireman's axe provides heavy duty chopping power to gain access to locked doors and hollow walls during an emergency.

- High carbon steel blade
- 9cm cutting edge
- Overall length: 34cm
- Weight: 1.2kg
- Pick spike for piercing and prying
- Anti slip handle
- Rubber protective blade cover



Fire Blanket in a case PVC

SPECIFICATIONS	Fire blanket	
CODE	70448	71298
DIAMENSION (cm)	100x100	120x180



0191

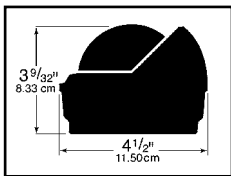
The Wheelmark Symbol denotes conformance with Standard ISO 10316(E) and ISO 613:2000(E).



Compasses Voyager S-87

SPECIFICATIONS	Compasses	
CODE	31260	31260
DESCRIPTION	Voyager S-87	Voyager S-87W
COLOUR	Black	White

- Boat Style/Size: Power/Up to 28 Feet (8.54m)
- Dial Size/Design: 3" (7.62cm)/Flat Card or Direct Read
- Night Lighting: 12V Green
- Compensators: Built-in
- Warranty: 5-Year
- Approx. Shipping Wt.: 1 lb. 3 oz. (539g)



Compasses Voyager B-81, with bracket mount



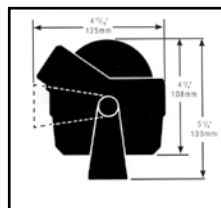
0735

The Wheelmark Symbol denotes conformance with Standard ISO 10316(E) and ISO 613:2000(E).



SPECIFICATIONS	Compass
CODE	71156
COLOUR	Black

- Boat Style/Size: Power
- Dial Size/Design: 3" (7.62cm)/Flat Card or CombiDial
- Night Lighting: 12V Green
- Compensators: Built-in
- Warranty: 5-Year
- Approx. Shipping Wt.: 1 lb. 3 oz. (539g)





Code.....31367

Binoculars Waterproof with Compass **Sea Nav WECR 7x50**

Technical Specifications

- Magnification x Objective Lens Diametre: 7 x 50
- Angle of Vision: 7,5^o
- Exit Pupil: 6,8mm
- Eye Relief: 23mm
- Focus: Individual Eye Focus (Diopter Control)
- Waterproof: Yes
- Fogproof: Yes
- Floating: Yes
- Prism Type: Porro BAK-4
- Field of View: 132@1000m
- Rangefinder Reticule: Yes
- Lens Coating: Multi coated
- Housing: Rubber
- Compass: Yes
- Weight: 890gr
- Dimensions: 20x8x15cm



Range finding reticule scale



Code.....31317

Binoculars Auto Sea Nav SAF 7x50

Technical Specifications

- Magnification x Objective Lens Diametre: 7 x 50
- Angle of Vision: 6.2^o
- Exit Pupil: 7,1mm
- Eye Relief: 10mm
- Focus: Auto-focus
- Prism Type: Porro K9
- Field of View: 133@1000m
- Lens Coating: Fully coated
- Housing: Rubber
- Weight: 750gr
- Dimensions: 6,5x19x20cm



Code.....31415

Night-Vision Monocular, SeaNav

Technical Specifications

- Vision under low light intensity
- Built-in IR illuminator to view objects clearly in dark conditions
- Very low power consumption
- Provided with functions against strong light and voltage stabilization
- Overall Dimensions: 172x82x60mm
- Weight: 438gr
- Powered by CR1234 battery (not included)



Straight pattern brass dividers

SPECIFICATIONS	Dividers	
CODE	94003	94004
LEGTH	17,8 cm (7")	20,3 cm (8")



Parallel ruler

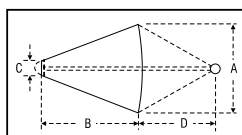
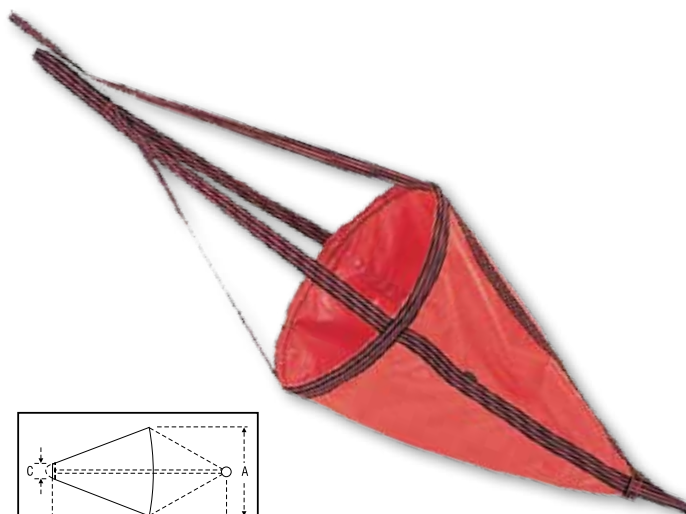
SPECIFICATIONS	Dividers	
CODE	94008	94009
LEGTH	38 cm (15")	30 cm (12")



Sea Anchor (Drogue)

Made of strong coated PVC with continuous webbing inside, for added strength. Suitable for boats between 4,5-12m.

CODE	Boats Length	A(cm)	B(cm)	C(cm)	D(cm)
10073	7,5m (25ft)	125	125	17	125
10074	9m (30ft)	135	142	20	125



ATTENTION: This is a very general guide and there may be variations based on the weight, keel of the boat, even on the intended use of the sea anchor etc. Your choice should not be based only on the guide.

Code.....71245

First Aid Kit SOLAS 74, For Life Boats - Life Rafts

Certified by the Ministry of Merchant Marine/Merchant Ships Directorate according to
 - the International Convention on the Safety of Life at Sea 1974 (SOLAS 74) and the 1983 amendments
 - the Royal Decree 36/1967
 - the Presidential Decree 277/1997.

Contents

Anti-Angina Preparations, Anti-Hemorrhagics Including Uterotonics, Anti-Acid Mucous Dressings, Anti-Emetics, Anti-Diarroeals, Analgesic-Antipiretics, Analgesic-Anti-Inflammatory Preparation, Antiseptic Mercurochrom, Antiseptic Eau Oxygenee, Burn Preparation, Cannula for Mouth to Mouth Resuscitation, Adhesive Elastic Bandage, Sterile Gauze Compresses, Cotton Wool, Disposable Polyethylene Gloves, Adhesive Dressings, Sterile Compression Bandages, Adhesive Sutures, Sterile Gauze with Fatty Water and Vegetable Oils for Burns, Adhesive Tape, Scissors, Thermometer, Disposable Syringes 2.5ml - 5ml





Code.....70461

Thermal Protective Aid “Alusafe-T” - LSA Code

- SOLAS Approved by “Lloyds” Registry
- Constructed with aluminium film coated fabric, protecting against hypothermia
- Ideal for prolonged exposure in liferaft and rescue boats
- Survivor’s protection from wind and cold is warranted
- Dimensions: 2,20x0,98 m



0038



Code.....72066

Lifeboat Fall Prevention Device

- Top quality with a premium Maximum Break Level of almost 40 tons
- Highly recommended for use during maintenance works for avoiding accidents
- In accordance to MSC 1 / Circ. 1327 suitable for most lifeboat types and approved by LLOYDS Register

Specifications

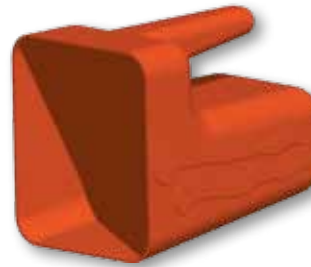
Set includes: 2 slings & 4 shackles
 MBL: 39.0 Tons
 SWL: 6.5 Tons
 DIAM: 22mm
 Length: 0.80mtr or 1.00mtr
 Lloyds Certificate (Lead time for Certificate preparation / 5 Days)
 Weight: 12.5kgs /Set
 Material: Polyethylene
 Enviromental Test available upon request





Storage Bottle

SPECIFICATIONS	Bottle
CODE	39644
CAPACITY (LT)	12
DIAMETER (MM)	240
HEIGHT (MM)	380



Code.....11919

Scoop bailer 2.5lt, orange



Palm Grip Paddle

Made of a marine grade aluminum shaft and virtually indestructible plastic handle and collar.

SPECIFICATIONS	Telescopic Hook
CODE	50300
DIAMETER	35 mm
LENGTH	220 cm



Telescopic Hook with 2 ends, Aluminium

SPECIFICATIONS	Telescopic Hook
CODE	50050
DIAMETER	3 cm
LENGTH (MIN)	118 cm
LENGTH (MAX)	204 cm



Telescopic Handle for hook, Aluminium

SPECIFICATIONS	Telescopic Hook
CODE	57342
DIAMETER	2,2 - 2,5 cm
LENGTH (MIN)	165 cm
LENGTH (MAX)	305 cm

Code.....57343
Hook with Thread - Black

Ø 22 mm





LALIZAS IMO SIGNS

Categories

- 1 IMO Symbols with text
- 2 IMO Symbols without text
- 3 Safety Signs
- 4 Direction Signs
- 5 Low Location Lighting Components
- 6 Transparent Signs
- 7 Fire Control Symbols to resolution A654
- 8 Fire Control Symbols to ISO17631
- 9 LSA Signs
- 10 Fire Signs
- 11 Mandatory Signs
- 12 Hazard Signs
- 13 Prohibition Signs
- 14 Combination Signs
- 15 Space Identification Signs
- 16 ISPS Code Signs
- 17 Galley Signs
- 18 Miscellaneous Signs
- 19 Accommodation Signs
- 20 Tie Tags
- 21 Signs for Passenger Vessels & Terminal Building
- 22 Hazard Diamonds
- 23 Posters
- 24 Pipe Identification Tape
- 25 Special Products



Manufactured with the superior quality of 3M™

Material	
Lalizas Code	
Material	814100
<hr/>	
81 - Photoluminescent, self adhesive vinyl	
82 - Photoluminescent, rigid PVC	
83 - White, self adhesive vinyl	
84 - White, rigid PVC	
85 - White, self adhesive paper or laminated paper	
86 - Transparent vinyl	
87 - Transparent, rigid plastic	
88 - Coloured vinyl or coloured polyethylene	

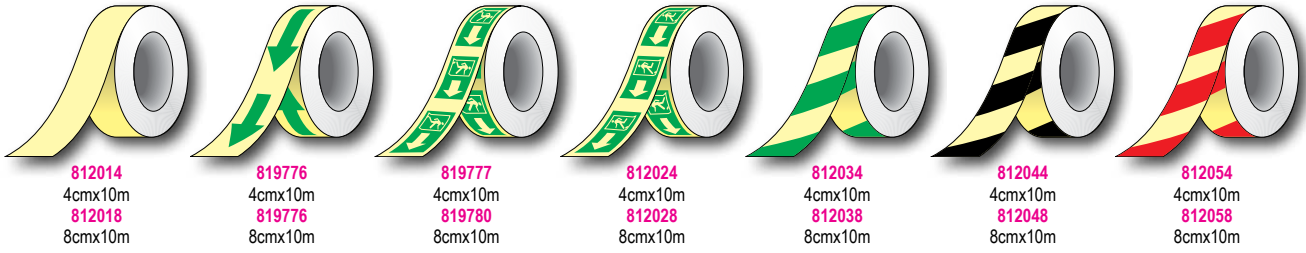
GET LALIZAS IMO SIGNS

Supplied Within **24 HOURS** in

GREECE
SPAIN
SINGAPORE
SOUTH AFRICA

www.lalizasimosigns.com

Low Location Lighting Components



812014
4cmx10m
812018
8cmx10m

819776
4cmx10m
819776
8cmx10m

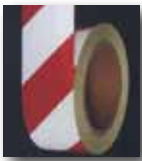
819777
4cmx10m
819780
8cmx10m

812024
4cmx10m
812028
8cmx10m

812034
4cmx10m
812038
8cmx10m

812044
4cmx10m
812048
8cmx10m

812054
4cmx10m
812058
8cmx10m



880001
5cmx10m
880002
9cmx10m



880003
5cmx10m
880004
9cmx10m



880005
5cmx10m
880006
9cmx10m



812086
5x5cm
812088
8x10m



822396
Rigid Sheet 8x100cm

822397
Aluminium frame 8,2x100cm

822394
Set III system rigid 7,5x100cm

822395
End Cap

812800
Magnetic sticky strips
812801
Double sided sticky pads
812802
Sign adhesive
812803
Applicator gun

Special Products

All signs can be produced in any language.





LALIZAS 

Service Station Network



**Check your nearest Service Station
on-line at**

www.lalizas.com/service.php

LIFERAFTS SOLAS & NON-SOLAS

We service ... your safety

LALIZAS liferafts provide the flexibility of going through their required service anywhere in the world, providing a global solution for both Commercial & Recreational users. Our global Authorized Service Station Network with a 100% operational function is fully supported by LALIZAS Headquarters in order to maintain and evolve our After Sales quality. All authorized stations have been approved to provide necessary actions of a complete liferaft service and so as to offer to our customers:

- Detailed Testing
- Complete Product Service
- Required Documentation (Inspection Certificates)



IMMERSION SUITS

Professional and certified service

Every station include all the necessary certifications to be authorized and inspect your acquired LALIZAS products. Our LALIZAS Neptune Immersion suits are found throughout the Global Shipping Industry and in several commercial vessels creating the need to be available for service in multiple ports of call.

LIFEJACKETS SOLAS & NON-SOLAS

Making you safe within a short time

When the most famous and best selling product range of LALIZAS is escorted by a solid station network, it is quite imminent to be announced as the cornerstone of all users' requested flexibility.

Inflatable jacket Inspection is provided through LALIZAS service practice with the most flexible way to deliver your items always on time and validated through the current regulations.



BREATHING DEVICES

Feel free to breathe safe

Making the highest standard inspections and services to assure normal operation in each device. Our Service teams around the world keep their mind and give priority on "Safety First". Our quality control goes through checking all valves, pressure gauges and even the compressed air quality to assure maximum operation for the user.

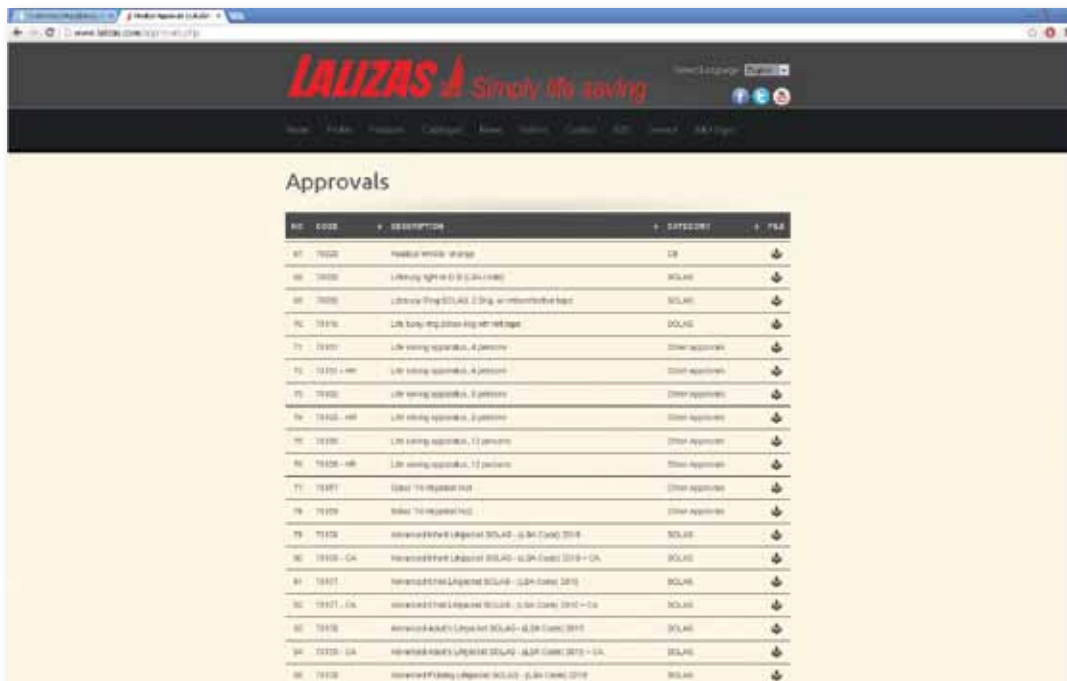
LALIZAS

PRODUCT APPROVALS

E-CERTIFICATES FOR LALIZAS PRODUCTS AVAILABLE ON-LINE!

VISIT OUR WEBSITE AND DOWNLOAD OUR APPROVAL CERTIFICATES **IN JUST 2 SIMPLE STEPS...**

1. Go to Profile menu and select "APPROVALS"
2. Find the item code and click the download icon on the right side.



NO.	CODE	DESCRIPTION	CATEGORY	FILE
01	7000	Medical vehicle storage	CR	↓
02	7006	Lithium light 60 (3.2Ah-1900)	SOULD	↓
03	7008	Lithium 90(SOULD 2.5g, 4000mAh) 1900	SOULD	↓
04	7016	Lithium 90(SOULD 4.0g, 4000mAh) 1900	SOULD	↓
05	7020	Lithium 60(SOULD 4 persons)	Other approvals	↓
06	7020 + HR	Lithium 60(SOULD 4 persons)	Other approvals	↓
07	7022	Lithium 60(SOULD 3 persons)	Other approvals	↓
08	7022 + HR	Lithium 60(SOULD 3 persons)	Other approvals	↓
09	7026	Lithium 60(SOULD 2 persons)	Other approvals	↓
10	7026 + HR	Lithium 60(SOULD 2 persons)	Other approvals	↓
11	7030	Lithium 60(SOULD 12 persons)	Other approvals	↓
12	7030 + HR	Lithium 60(SOULD 12 persons)	Other approvals	↓
13	7024	Water 7000-3000mAh	Other approvals	↓
14	7028	Water 7000-3000mAh	Other approvals	↓
15	7028	Approved ERM 1 Lithium SOULD - 60 (3.2Ah) 2019	SOULD	↓
16	7028 - CA	Approved ERM 1 Lithium SOULD - 60 (3.2Ah) 2019 - CA	SOULD	↓
17	7028 - CA	Approved ERM 1 Lithium SOULD - 60 (3.2Ah) 2019 - CA	SOULD	↓
18	7027	Approved ERM 1 Lithium SOULD - 60 (3.2Ah) 2019	SOULD	↓
19	7027 - CA	Approved ERM 1 Lithium SOULD - 60 (3.2Ah) 2019 - CA	SOULD	↓
20	7026	Approved ERM 1 Lithium SOULD - 60 (3.2Ah) 2019	SOULD	↓
21	7026 - CA	Approved ERM 1 Lithium SOULD - 60 (3.2Ah) 2019 - CA	SOULD	↓
22	7028	Approved ERM 1 Lithium SOULD - 60 (3.2Ah) 2019	SOULD	↓

The approval is ready to use...



LALIZAS 

LALIZAS Hellas

3 Gounari, Piraeus P.C.18531

Tel.: +30 210 4226274

Fax: +30 210 4226273

E-mail: commercial@lalizas.com

www.lalizas.com